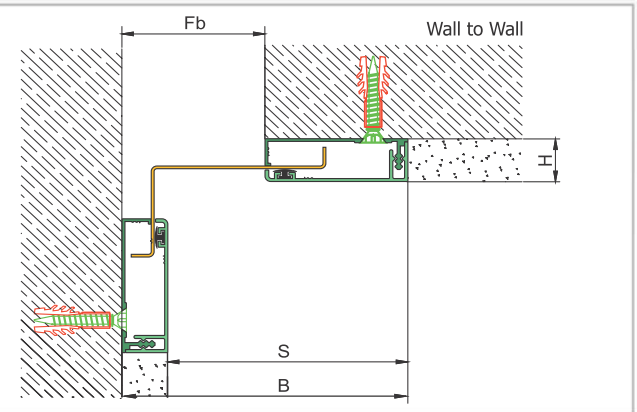
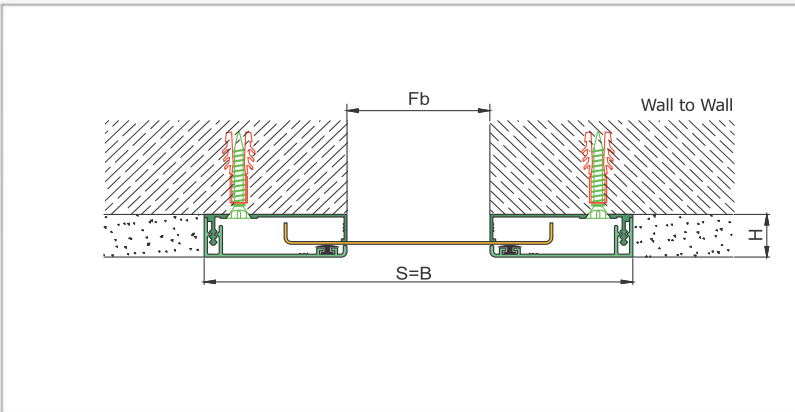
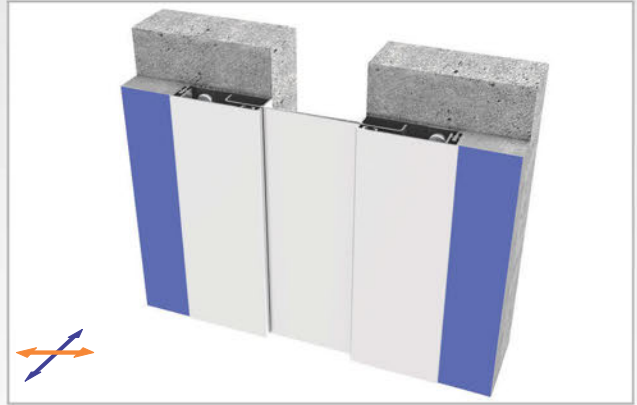
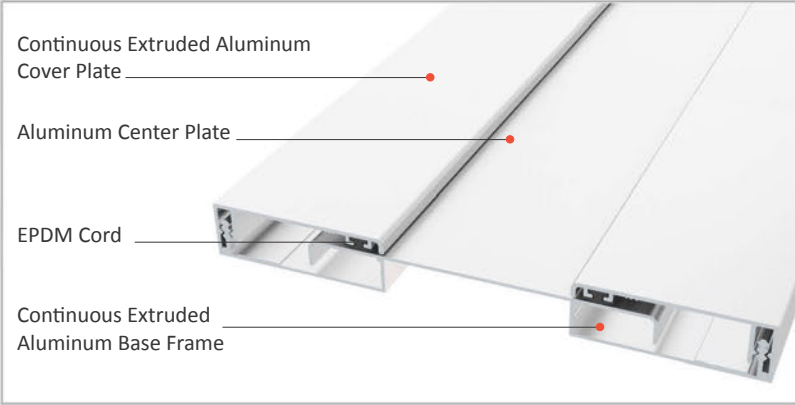




AS A154 profile is designed for wall & ceiling applications at indoor areas as well as exterior wall applications. It functions as a seismic profile and gives a decorative aspect with invisible screwing system. Base frames of the profile are fixed on the surface at both sides and the movable center plate meets the displacements. It can be used as surface or flush mounted. EPDM cords placed between cover and middle plates tighten the plates and eliminate metal stroking noise. AS A154 can be applied up to 100 mm gaps. For wider gaps AS A155 model should be preferred. For exterior applications, please inform Asteknik before placing an order.

- Application Areas** : Indoor & Outdoor / Wall & Ceiling
- Ideal for** : Airports, Shopping Malls, Residences, Hospitals, Hotels, Commercial & Public Buildings etc.
- Material** : Anodized Aluminum, EPDM Cord
- Aluminum Alloy** : 6063 AA-USA / EN AW 6063
- Optional Supplies** : Fire Barrier, Waterproof EPDM membrane

SEISMIC

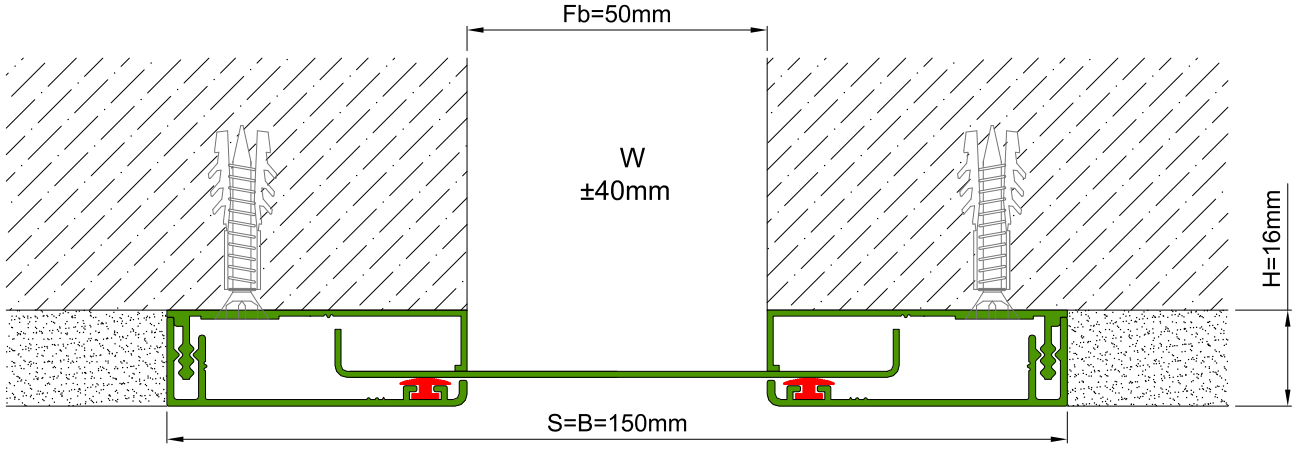
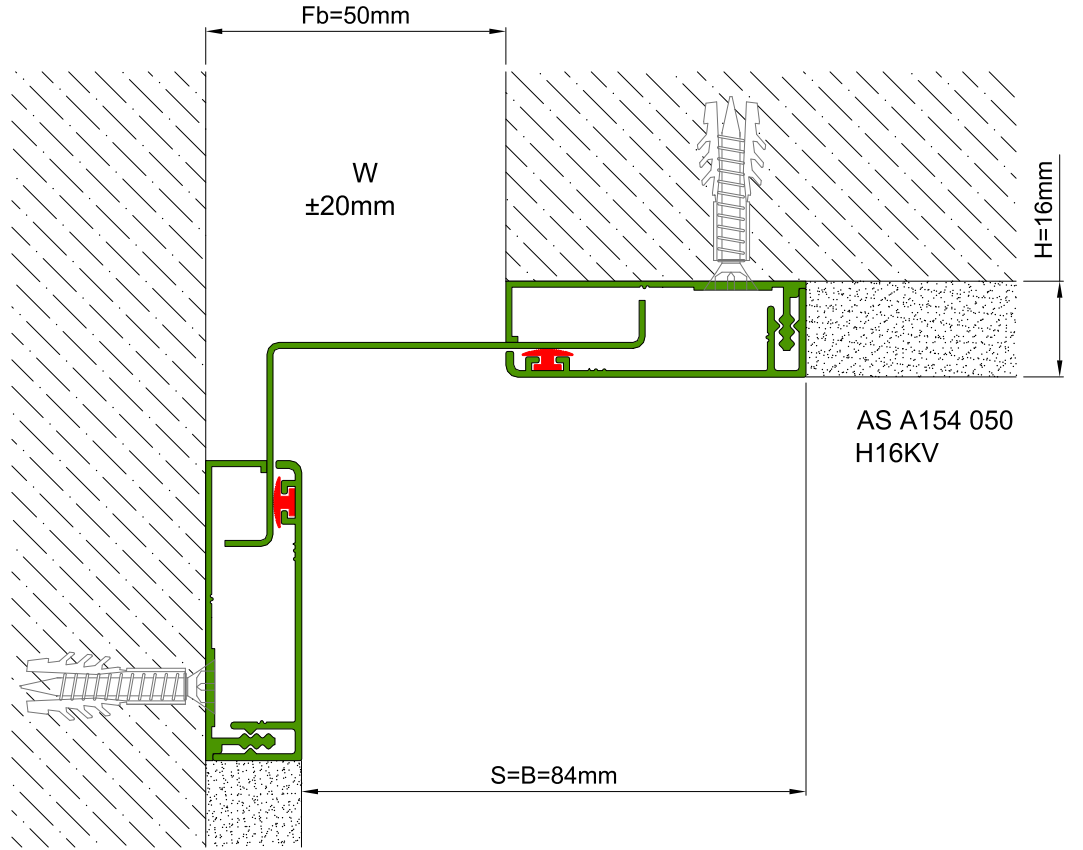


* Visuals are representative and the profile configuration may differ depending on the characteristics requested.

LOCATION	MODEL	GAP (Fb) mm	HEIGHT (H) MM	OVERALL WIDTH (B) mm	VISIBLE WIDTH (S) mm	MOVEMENT (W) mm	LOAD CAPACITY	STANDARD LENGTH (mt)
Wall to W all	AS A154-030	30	16	130	130	+40/-30	N/A	3
	AS A154-050	50	16	150	150	± 40	N/A	3
	AS A154-080	80	16	180	180	± 40	N/A	3
	AS A154-100	100	16	200	200	± 40	N/A	3

Note: Please ask for different sizes




 AS A154 050
 H16V

 AS A154 050
 H16KV

Profil No Profile Number	AS A154 050	AS A154 050K
Fb (mm)	50	50
H (mm) yaklaşık approx.	16	16
W± (mm) yaklaşık approx.	±40	±20
Renk Color	Alüminyum Orta ve Üst Kapak: Elokсалı, Alüminyum Bağlantı Elemanı: Natürel, Fitiller: Siyah Aluminum Center and Cover Plate: Anodised, Aluminum Base Frame: Natural, Inserts: Black	
Malzeme Material	Alüminyum, EPDM Kauçuk(siyah) Aluminum, EPDM Rubber(black)	
Standart Uzunluk Standard Length	3	